



Alberta HUB
Where opportunity comes to life



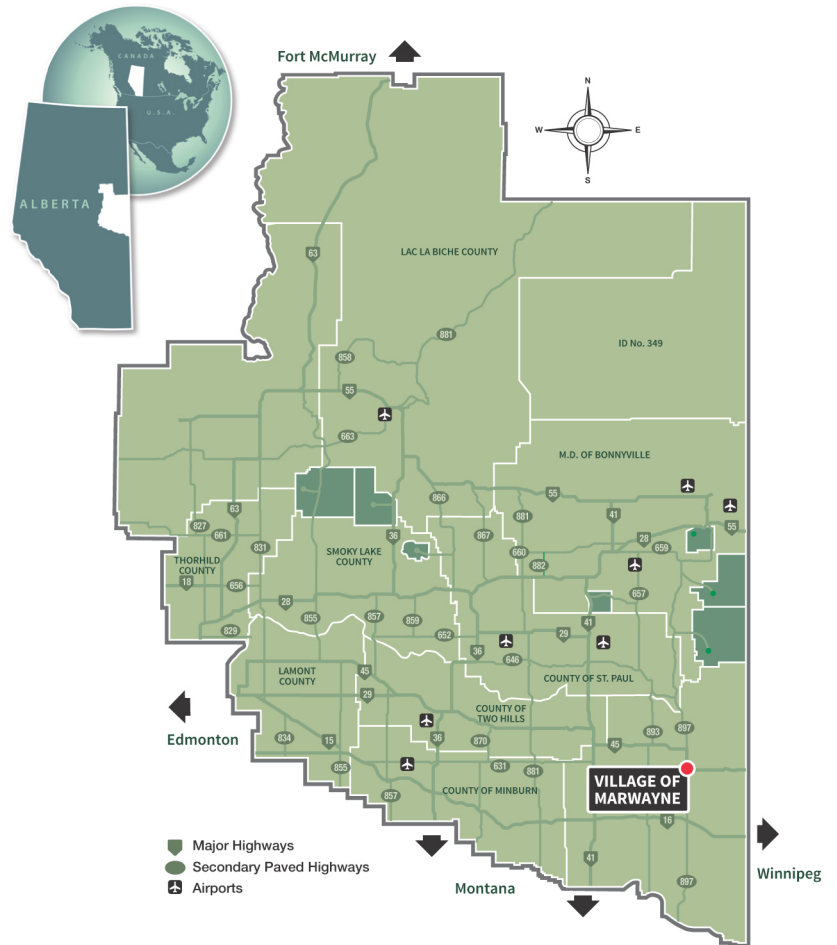
Living in The Village of Marwayne



ABOUT THE VILLAGE OF MARWAYNE

The Village of Marwayne is located in the southeast of the Alberta HUB region, a partnership of communities, post-secondary educational institutions and business/industry in Northeastern Alberta meant to enhance the quality of life and economic interests of this region. Located on Secondary Highway 897, just 10 minutes north of the Yellowhead Trans Canada Highway, Marwayne is one of the best farming and ranching districts in Western Canada. Marwayne's slogan "Life from all Angles" plays off our unique street configuration and acknowledges the history of our community.

While Marwayne has retained its rural, small-town atmosphere, it fosters a modern business culture in an oil, gas, and agriculture rich region. Choose the Marwayne advantage: a lifestyle that embraces everything needed for a rich and fun-filled life that balances community, family, business and play. We invite you to visit our community and personally experience Marwayne's angles.



The Village of Marwayne is a member of the Northeast Alberta Information HUB, which is the regional economic development alliance for Northeast Alberta.





Living in The Village of Marwayne



Healthcare

Nearby hospitals are at Lloydminster and Vermilion. There is a sub-unit of the Minburn-Vermilion Health Unit in Kitscoty. Marwayne also has self-contained seniors housing. Lloydminster, Islay and Vermilion provide further nursing home care.

- The Vermilion Health Centre offers services in acute and continuing care, emergency, palliative care, diagnostic and therapeutic services, and more.
- The Lloydminster Hospital provides acute care, emergency, rehabilitation, obstetrics, and more.



Education

Marwayne is part of the Buffalo Trail Regional School Division #28, headquartered in Wainwright. Marwayne Jubilee School provides education for Grades K to 12. The School offers Home Economics, computer labs, facilities for photography, drama and music, and great extra-curricular activities. Sports teams regularly advance to provincial competition. Post-secondary opportunities are located nearby at Lakeland College with campuses in Lloydminster or Vermilion, which offers more than 20 career programs. It has become a major center for agricultural and apprenticeship training programs.



Housing

The Village of Marwayne has lots available and is a community full of recreational variety and opportunity. Affordable housing is offered and nearby realtors are ready to assist you:

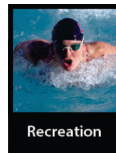
- Northern Lights Realty 2000: 780-853-6743
- Century 21: 306-825-3700
- Musgrave Agencies: 780-875-9159
- Re/Max Prairie Realty: 780-853-2120
- Re/Max of Lloydminster: 780-808-2700
- Stewart Realty: 780-853-4752
- Coldwell Banker: 780-875-8631



Community Services

Marwayne offers high quality services for its residents. The businesses available include: legal services, banks, grocery stores, beauty salon, restaurant, hardware store, hotel, convenience store, liquor store, laundromat, car wash, post office, and boutique shopping. Emergency and 911 services are also available:

- Fire & Rescue: Marwayne is served by a local 15-member volunteer fire and rescue department.
- Police Services: Marwayne is served by the Kitscoty detachment of the RCMP.
- Ambulance Services: The Lloydminster Ambulance Service provides service to Marwayne.



Recreation

Marwayne has a three-sheet curling rink and large skating arena, a ball park and tennis court. Annual events include the Agricultural Society fair, the annual indoor Professional Bull Riding event in April; Lea Park Pro Rodeo, held the first weekend in June and runs consecutively since 1954; Street dance held in June; and Light Up Marwayne in December. Many residents, tourists and some of the top professional cowboys in the world are attracted to our rodeos and scenic setting.

DEMOGRAPHICS

Population	606 (2017 Municipal Census)
Families*	183
Aggregate Household Income*	\$18,288,960
Average Household Income*	\$76,204

*Source: 2014 Environics Estimates



Contact Us

Village of Marwayne
210-2nd Ave South, Box 113
Marwayne, AB. T0B 2X0
780-847-3962

www.marwayne.ca

Alberta HUB



www.albertahub.com