

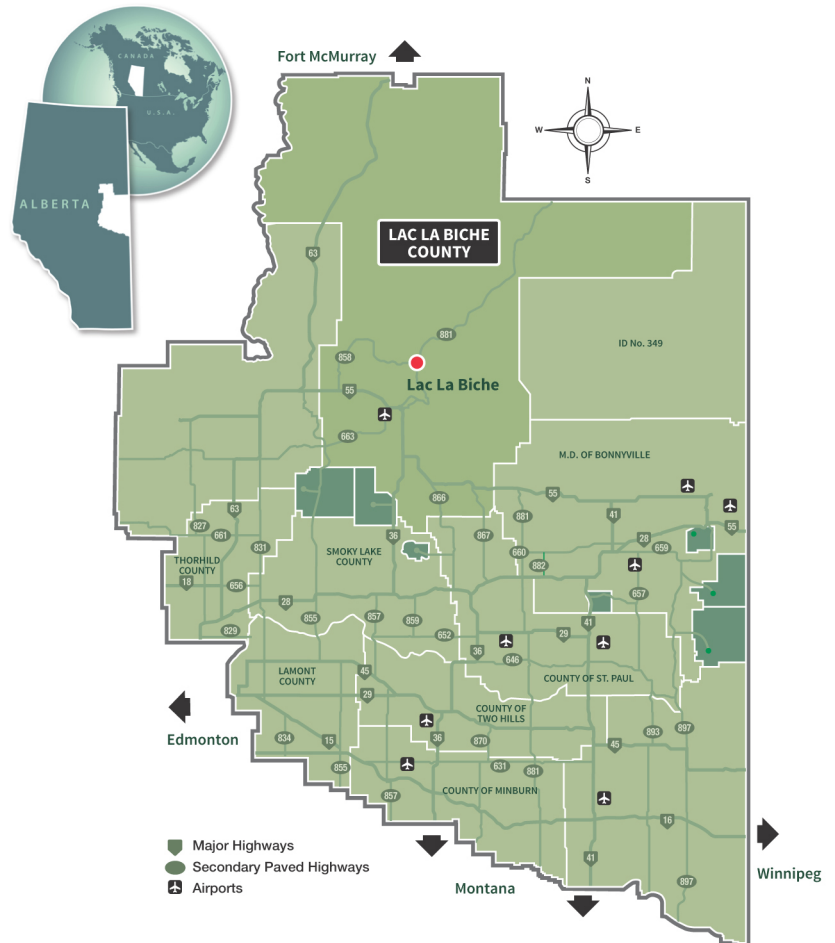
# Living in Lac La Biche County



## ABOUT LAC LA BICHE COUNTY

Lac La Biche County is located in the northwest of the Alberta HUB region. The Alberta HUB is a partnership of communities, post-secondary educational institutions, and business/industry in Northeastern Alberta meant to enhance the quality of life and economic interests of the region. Located approximately 2.5 hours northeast of Edmonton, the County is an area blessed with natural beauty in the form of an abundance of lakes, old growth forests, wildlife and excellent outdoor recreational opportunities.

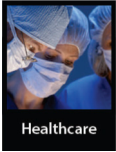
The history of the region is rooted in its strategic location for the fur trade. It's location remains important today. Intersected by three major arterial roads (Highway 36, Highway 55, and Highway 881), Lac La Biche County is a centrally-located service center. Lac La Biche County is the municipality of choice for commercial, retail, housing and lifestyle investment in the region.



Lac La Biche County is a member of the Northeast Alberta Information HUB, which is the regional economic development alliance of Northeast Alberta.



## Living in Lac La Biche County



### Healthcare

Lac La Biche County is proud to have the 24-hour William J. Cadzow Healthcare Centre, which is an acute care and continuing care facility. Services include pharmacy, rehabilitation, laboratory, respite care, palliative care, x-ray and dialysis. Community health services include:

- Dental Clinic, Pharmacies
- Optometrist, Chiropractor
- Holistic Health Care Centre
- Ground and Air Ambulance



### Education

Lac La Biche County offers a range of educational options spanning pre-school to post-secondary and includes bilingual options:

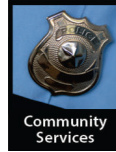
- Daycare/Nursery: Hand n Hand Trilingual Preschool
- Public School: Vera M. Welsh Elementary School; Aurora Middle School; J. A. Williams High School
- Outreach Education: Lac La Biche Outreach School
- French Education: École Beauséjour, École Plamondon School
- Post-secondary: Portage College



### Housing

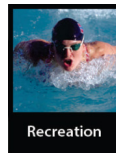
Affordable housing options will soon be plentiful in Lac La Biche County. Rural subdivisions offering all the amenities of municipal living are being developed at record rates. Lakeshore cabins are all the rage, and getaway retreats hidden deep in the boreal forest are the pride of many new families. Local realtors and developers are ready to accommodate new residents, but it is the clean air, unobstructed views and hospitable community that really do the selling.

- RE/MAX La Biche Realty: 780-623-2514
- Royal LePage Lakeland Real Estate: 780-689-2486
- Century 21 Lakeland Real Estate: 780-623-2100



### Community Services

Lac La Biche County features an excellent variety of local organizations, stores, speciality shops, restaurants, motels, and service businesses providing unique products and personalized service. We are very proud of our vibrant region, specialized businesses, and emergency services. The RCMP house a local detachment in the hamlet of Lac La Biche and work with Lac La Biche County Protective Services department (Fire and Enforcement services) on emergency and enforcement management.



### Recreation

Lac La Biche County is the ideal getaway destination. Whether you are looking for an adventure or to enjoy a relaxing day outdoors, there is something for almost everyone. With numerous lakes in the area, you can spend winter days ice fishing, cross country skiing or snowmobiling on many kilometers of scenic woodland trails. Those gorgeous summer days offer great opportunities to take it to the lake or out to the green. The summer is also prime time to splash in the park along the lake, or go on an extended camping trip in the Lakeland Provincial park. The community boasts an abundance of choices for residents and guests alike. Newcomers are impressed with our wide range of clubs, associations and facilities. Our Bold Centre is a 227,000 sq. ft. community recreation, entertainment and education facility.

## DEMOGRAPHICS

Population	8,330 (2016 Federal Census)
Families*	2,423
Aggregate Household Income*	\$302,042,226
Average Household Income*	\$98,513

\*Source: 2014 Environics Estimates

### Contact Us

Lac La Biche County  
Box 1679  
Lac La Biche, AB. T0A 2C0  
780-623-1747  
[www.laclabichecounty.com](http://www.laclabichecounty.com)

### Alberta HUB



[www.albertahub.com](http://www.albertahub.com)