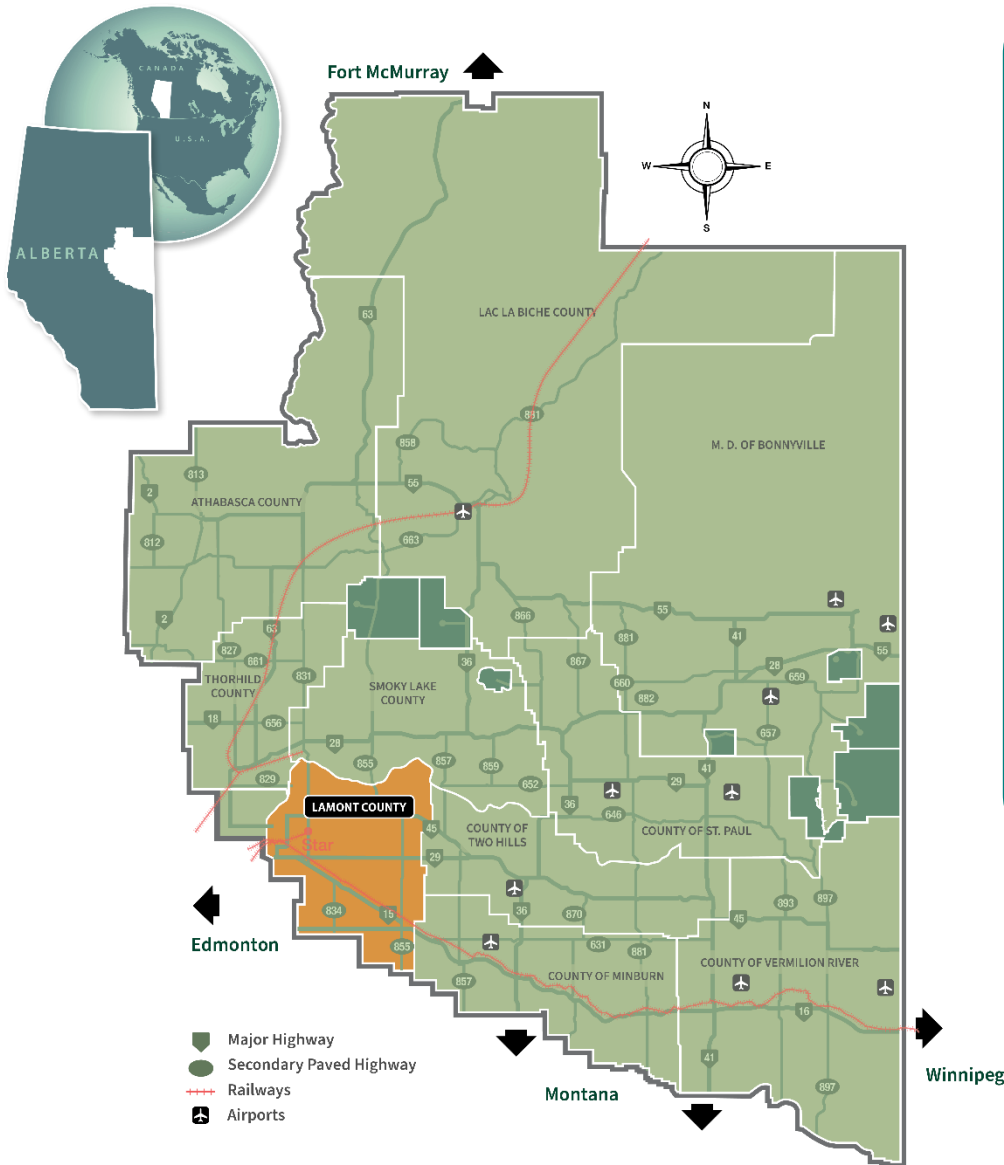


Lamont County

CONNECTED TO GLOBAL MARKETS



Agriculture is a major industry sector with a variety of crops such as canola, barley, and wheat. Each are grown with flaxseed and oats, which are increasing 893% and 67%, respectively, from 2016 to 2021. Lamont County is the 3rd largest county in the Alberta HUB region with gross farm receipts over \$148 million and Livestock/Poultry valued at over \$44 million.

The large number of agriculture service businesses in the region help support the sector; this includes farm equipment sales/service, fuels/fertilizers, livestock products/services and grain handling companies, Richardson Pioneer and Viterra. Rail access is available in the Towns of Bruderheim, Lamont, Mundare and the Village of Chipman.

Lamont County is a transportation hub with Highways 16 (Yellowhead) connecting to the west coast ports and the Asian markets. Highways 15, 29 and 45 provide excellent access to regional and provincial markets. International air service is available at the Edmonton International Airport 60 minutes away. Lamont County has rail service by CN and CPKC.

Farming Overview	2016*	2021*	% ±
Number of Farms	689	651	-5.52%
Total Land Area - km2	2,385	2,386	0.04%
Land in Crops - acres	398,381	345,424	-13.29%
Natural land for pasture - acres	110,364	51,900	-52.97%
Number of Farm Operators	920	830	-9.78%
Number of Employees	330	151	-54.24%
Gross Farm Receipts	\$181,264,477	\$148,848,811	-17.88%

*Source: Statistics Canada Census of Agriculture, and community information. Figures are based on number of farms reporting.

Lamont County has 651 farms with almost 350 thousand acres of land in crops with gross farm receipts estimated over \$148 million in 2021.

Crop Overview	2016*	2021*	% ±
Canola - acres	133,493	122,585	-8.17%
Wheat - acres	116,454	95,282	-18.18%
Barley - acres	54,113	50,400	-6.86%
Alfalfa and alfalfa mixtures - acres	33,646	24,806	-26.27%
All other tame hay and fodder crops - acres	11,554	14,074	21.81%
Oats - acres	12,260	20,453	66.83%
Dry field peas - acres	27,485	6,684	-75.68%
Fruits, Berries and Nuts - acres	25	10	-60.00%
Lentils - acres	n/a	n/a	n/a
Total rye - acres	1,296	337	-74.00%
Flaxseed - acres	540	5,361	892.78%
Vegetables - acres (excluding greenhouses)	11	13	18.18%
Total greenhouse area in use - square feet	n/a	32,488	n/a

*Source: Statistics Canada Census of Agriculture, and community information. Figures are based on number of farms reporting. n/a - not available from Statistics Canada Census data

Livestock Overview	2016*	2021*	% ±
Value of Livestock & Poultry	\$95,106,331	\$44,844,324	-52.85%
Cattle and Calves #	43,104	28,541	-33.79%
Dairy Cows #	n/a	11	n/a
Beef Cows #	n/a	13,129	n/a
Heifers #	10,220	3,420	-66.54%
Calves #	10,705	9,344	-12.71%
Steers #	8,323	1,715	-79.39%
Bulls #	816	922	12.99%
Bison # (12 farms reporting 2016)	2,432	168	-93.09%
Hens and Chickens #	39,607	35,715	-9.83%
Sheep and Lambs #	1,179	1,038	-11.96%

*Source: Statistics Canada Census of Agriculture, and community information. Figures are based on number of farms reporting. n/a - not available from Statistics Canada Census data

Lamont County is home to the 300-acre VIP Rail Alberta Midland with the capacity to store and switch up to 1,650 railcar storage spots and a unit train capable loop track.



The Alberta Agriculture, Forestry and Rural Economic Development lists the value of agricultural land in the County as \$2,930/acre in 2021.