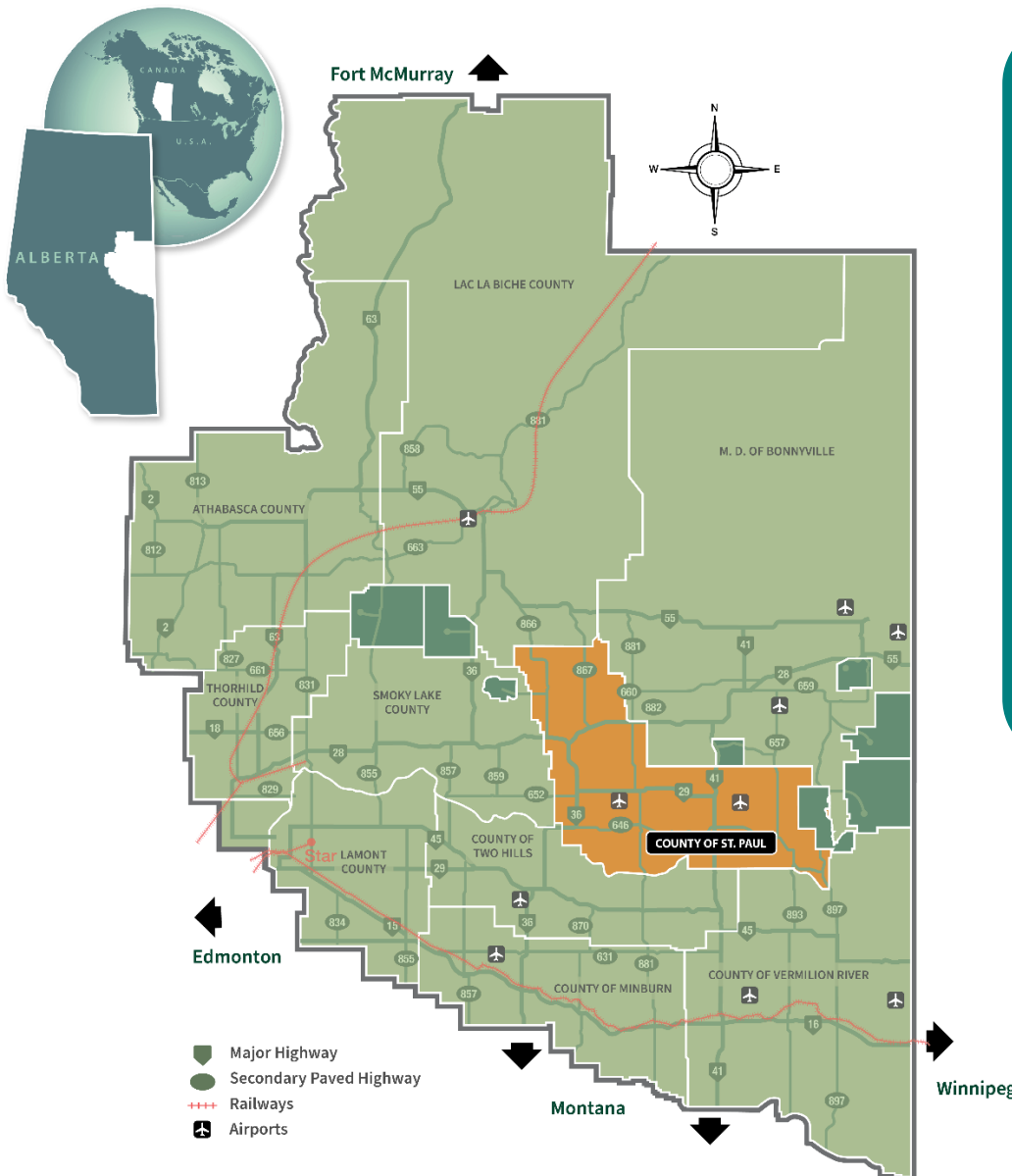


St. Paul County

CONNECTED TO GLOBAL MARKETS



The County of St. Paul is part of the Aspen Parkland Region and it's known for the most fertile soil in the province. The County is home to many cattle, dairy, hog and poultry farms. The Towns of St. Paul and Elk Point support the Agriculture industry with agriculture suppliers, including major farm equipment dealers and suppliers serving grains and livestock producers.

The County has a stable agriculture sector with 671 farms producing coarse grains such as wheat, barley and canola. Pea field acreages are also increasing to over 8,000. And in 2021, both Gross Farm Receipts and the Value of Livestock & Poultry held strong at over \$152 million each.

The County of St. Paul offers global market access with its highway system. Highways 36 and 41 run north/south through the County accessing U.S. markets to the south. Highway 28, a main east/west highway connects County of St. Paul to the Edmonton market. The St. Paul and Elk Point Airports offer excellent air services. Rail access is gained 90 km south to the CN main line.

Highway 36 is the high load corridor defined as the Eastern Alberta Trade Corridor, connecting to U.S. and Mexican markets.

Farming Overview	2016*	2021*	% ±
Number of Farms	680	671	-1.32%
Total Land Area - km2	3,309	3,280	-0.89%
Land in Crops - acres	293,577	317,589	8.18%
Natural land for pasture - acres	247,298	230,958	-6.61%
Number of Farm Operators	965	900	-6.74%
Number of Employees	324	193	-40.43%
Gross Farm Receipts	\$163,658,520	\$152,956,730	-6.54%

*Source: Statistics Canada Census of Agriculture, and community information. Figures are based on number of farms reporting.

Crop Overview	2016*	2021*	% ±
Canola - acres	63,380	77,954	22.99%
Wheat - acres	41,869	58,152	38.89%
Barley - acres	50,866	50,995	0.25%
Alfalfa and alfalfa mixtures - acres	73,194	66,852	-8.66%
All other tame hay and fodder crops - acres	22,582	23,838	5.56%
Oats - acres	24,887	21,823	-12.31%
Dry field peas - acres	5,949	8,052	35.35%
Hemp - acres	1,000	19	-98.10%
Honey - producers	12	n/a	n/a
Faba Beans - acres	1,000	609	-39.10%
Flaxseed - acres	0	50	n/a
Vegetables - acres (excluding greenhouses)	29	34	17.24%
Total greenhouse area in use - square feet"	n/a	44,360	n/a

*Source: Statistics Canada Census of Agriculture, and community information. Figures are based on number of farms reporting. n/a - not available from Statistics Canada Census data

St. Paul Municipal Seed Cleaning Plant provides quality seed processing, cleaning cereals, pulses and pedigreed seed. International sales consist of dry green peas, canola and oats, with green peas reaching global markets of India, the United States, Philippines, China, Singapore, Venezuela and Hong Kong.

Livestock Overview	2016*	2021*	% ±
Value of Livestock & Poultry	\$165,495,317	\$151,245,698	-8.61%
Cattle and Calves #	78,674	95,629	21.55%
Dairy Cows #	121	90	-25.62%
Beef Cows #	30,312	39,553	30.49%
Heifers #	10,720	15,227	42.04%
Calves #	27,836	32,470	16.65%
Steers #	7,936	6,407	-19.27%
Bulls #	1,749	1,882	7.60%
Pigs #	532	140	-73.68%
Hens and Chickens #	21,086	36,168	71.53%
Sheep and Lambs #	1,082	1,122	3.70%

*Source: Statistics Canada Census of Agriculture, and community information. Figures are based on number of farms reporting. n/a - not available from Statistics Canada Census data

*Value-Added Agriculture:
Lakeland College Vermilion Campus specializes in crop/livestock applied research with industry partners and research scientists.*



LARA (Lakeland Agricultural Research Association) conducts applied research and demonstrations throughout the northeast region providing valuable information to producers. LARA is a member of the Agricultural Research and Extension Council of Alberta.